

We are glad that you've chosen the Wax'N'Fire company.

We aim to inspire as many people as possible to create handmade candles, and thus make the production and usage of candles more popular.

If you have any questions or you want to get acquainted with other products of ours, go to our website [waxnfire.com](http://waxnfire.com)

You can also find out about our new products on Instagram [@wax.n.fire](https://www.instagram.com/wax.n.fire)



## Short instructions for making soy candles

Dear customer,

Wax'N'Fire team thanks you for choosing our product. We designed a unique set for creating natural, high-quality, and adorable candles.

Our set includes a premium soy wax Wax'N'Fire 041, cotton wicks, double sided glue dots for wicks, and centering devices.

While creating the candles with our set, you can dive into the world of creativity and make a unique atmosphere in your own home.

# Main features of Wax'N'Fire 041 soy wax

- **Function** Container candles
- **Maximum heating temperature** ± 176-185°F
- **Recommended filling temperature of the fragrance** ± 149-167°F
- **Compatibility with dyes** Yes
- **Melting point** ± 100-111°F
- **Optimal fragrance content in the wax** 6-10%, 12% max.
- **Recommended pouring temperature** ± 135-149°F
- **Adhesion level** High

## Wax storage conditions:

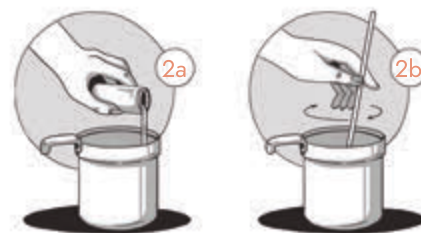
It is recommended to store it at 75,2°F or lower in a dry and ventilated room. Protect from extreme conditions, do not store at temperatures above 89.6°F and temperatures below 41°F.

## Step-by-step guide on making candles\*



Melt the wax in a water bath until it is liquid at 149-167°F, stirring gently.

**\*Important: Do not heat wax above 185°F.**

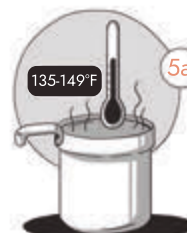


Remove the wax from the water bath. If desired, at this stage, while the wax is cooling, you can add flavoring (6-12% of the wax volume) or dye. After you have added the necessary ingredients, gently stir the wax.



Attach the double-sided glue dots for the wick on the base of the wick.

Place the sticky side of the wick on the bottom of the container in the center and secure the wick to the surface of the container using the centering device.



Cool the wax to 135-149°F (not below 113°F) and stir in the fragrance again.



Pour the wax into a container with a wick.

**\*It is not advisable to move the container as the wax hardens.**

Cut the wick after the candle has set and leave 5-6 mm from the surface.



Congratulations! You have created natural soy candles with your own hands.

\*These instructions are of recommendatory nature